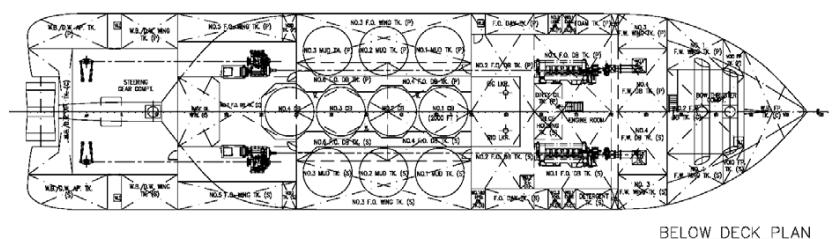
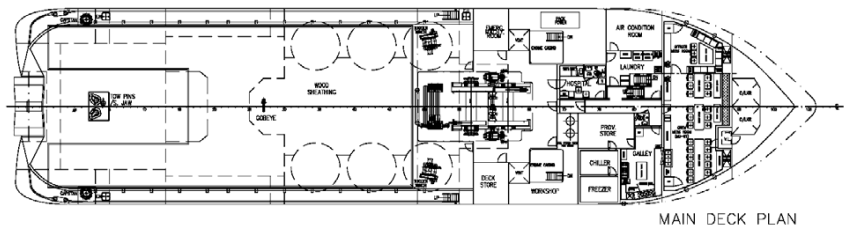
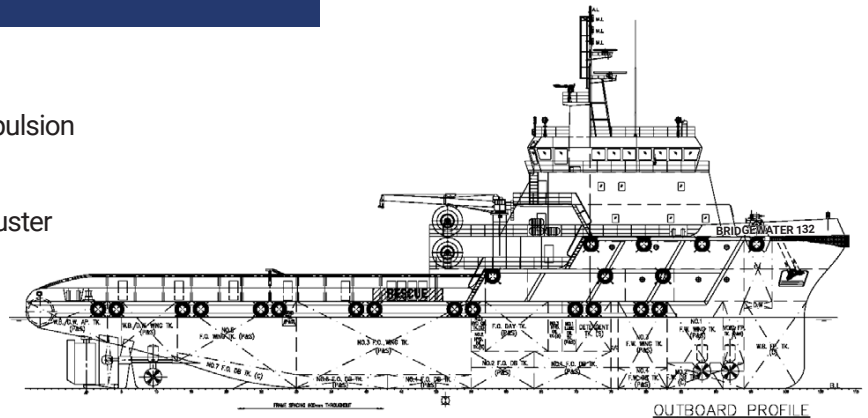




10,800BHP 130TBP DP2 FIFI 1 Anchor Handling Tug Supply Standby Escort Rescue Tug

Features

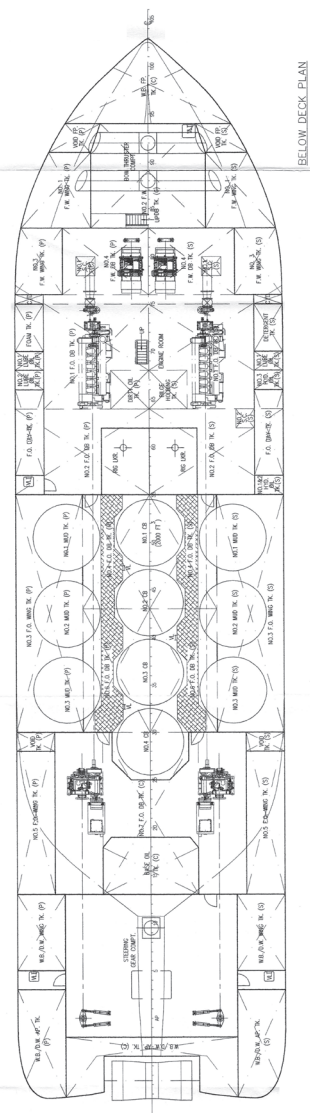
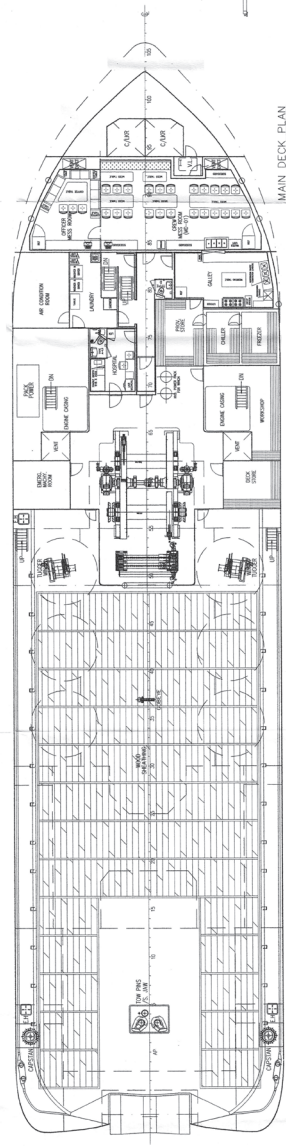
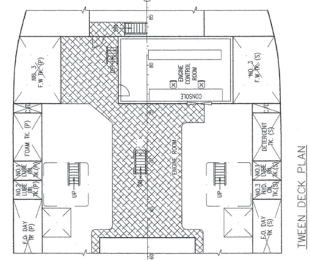
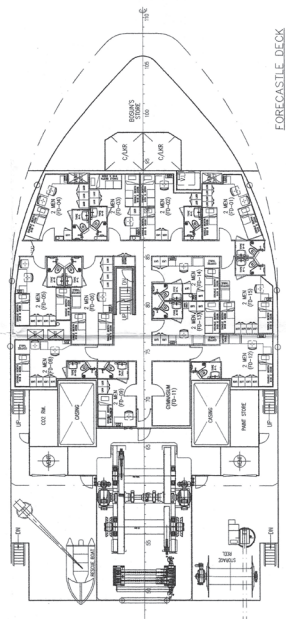
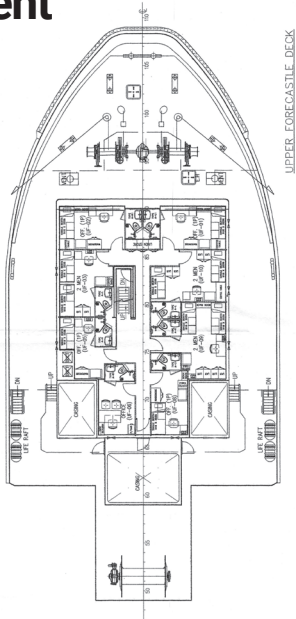
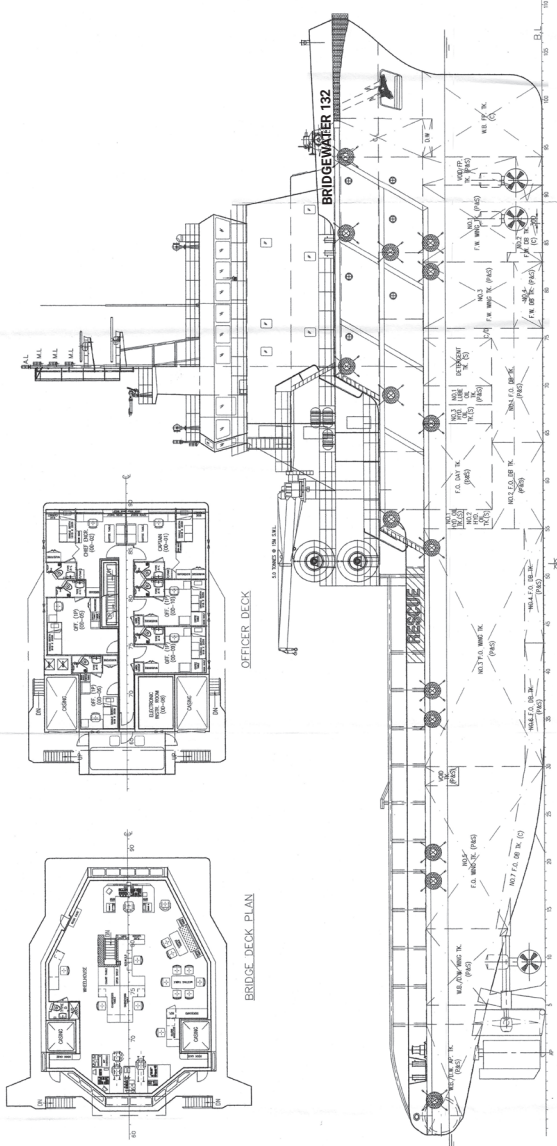
- ▶ 10,800 BHP (8,000KW) Controllable Pitch Propulsion
- ▶ 120MT to 135MT Bollard Pull
- ▶ 2 x 800kw Bow Thruster & 1 x 800kw Stern Thruster
- ▶ Fuel Capacity: 1200 MT // Clear Deck : 500 M2
- ▶ Deadweight Capacity : 2180MT
- ▶ Dynamic Positioning DP-2 System
- ▶ Fire-Fighting FiFi Class 1
- ▶ CCTV Ship Security & Operations
- ▶ V-SAT Ku Band Intellian V85
- ▶ Anti Pollution Oil Spill Response
- ▶ Environmental IMO Compliance
- ▶ Accommodation Total 40 Berths
- ▶ 27 Cabins c/w Ensuite Bathroom
- ▶ 10 Single & 15 Double Cabin
- ▶ 1 Hospital Cabin
- ▶ 1 Ship Office Cabin
- ▶ Galley with Messroom for 30 persons
- ▶ Recreation & Laundry Room



General Arrangement

PRINCIPAL DIMENSIONS

- 70,000 M
 - 20,000 M
 - 16,800 M
 - 6,100 M
 - 2000 TONS
 - 1250 M³
 - 490 M³
 - 335 M³
 - 105 M³
 - 50 M³
 - 800 TONS
 - 226 M³
 - 420 M³
 - 140 M³
 - 130 TONS
 - 40 MEN
- LENGTH (O.A.)
 LENGTH (B.P.)
 BEAM (MID.)
 DESIGN DRAFT
 TOTAL DWT AT 5.80M
 FUEL OIL
 DRILL WATER / WB
 MUD
 BASE OIL
 DECK CARGO (DECK LOADING = 7.57/M²)
 DRY BULK TANKS (4x2000 FT³=8000 FT³)
 WAREHOUSE
 COLLARD PULL
 COMPLIMENT
 CLASS & NOTATION : ABS ★ A1 Towing Vessel, Fire Fighting Vessel Class 1,
 Offshore Support Vessel, Ⓞ, ★AMS, ★DP-2



MAIN PARTICULARS

Vessel Name	BRIDGEWATER 132
IMO No.	9555424
Year Built	2010-02
Place Built	Fujian Southeast Shipyard-China
Port - Flag Registry	Port Kelang, Malaysia
Callsign	9MYS9
Official No.	336926
GRT / NRT	2708
ABS Class Certificate No.	812
Class Notation	A B S ⚡A1 Anchor Handling Towing Vessel FiFi Class 1 Offshore Support Vessel (E) ⚡AMS ⚡ DPS-2 Unrestricted Navigation

DIMENSIONS

Length - OA	70.00 M
Length - BP	64.00 M
Breadth - Moulded	16.80 M
Depth - Moulded	7.50 M
Draft - Moulded	6.10 M
Deadweight Max Capacity	2180 tonnes
Deck cargo capacity	700 tonnes
Main Cargo Deck (L x B)	33.5M X 13.5M
Deck Strength	7.5 Tonnes /M2
Deck Area	500 M2

BULK CAPACITIES

		TRANSFER RATE
Fuel Oil	1221 m3	1 x 150m3/h @75m head
Fresh Water	393.5 m3	1 x 150m3/h @75m head
Ballast/Drill Water	339.7 m3	1 x 150m3/h @75m head
Liquid Mud / Brine	490 m3	2 x 75m3/h @75m head
Base Oil	104 m3	1 x 61m3/h @90m head
Dry bulk mud / cement	226 m3	2 x 18m3/h @80psi

MACHINERY

Main Engine Propulsion	2 x 4000kw@750rpm Wartsila 8L32 Diesel Engine CPP Propeller in Kort Nozzle Total 10800bhp
Bow Tunnel Thruster CPP	2 x 600kw(800bhp) Wartsila CT175H-D 9.5te thrust
Stern Tunnel Thruster CPP	1 x 600kw(800bhp) Wartsila CT175H-D 9.5te thrust
Auxilliary Diesel Generator	2 x 350kw Leroy 415V/3P/50Hz Caterpillar C18
Shaft Generator	2 x 1600kw 415V/3P/50Hz Marelli Motori
Emergency Generator	1 x 65kw/415V/3P/50Hz Caterpillar C4.4
Bulk Air Compressors	2 x Airman SWS125/18m3/h x 80 PSI
Service Air Compressors	2 x Sperre PL2 /77 3.3Mpa

PERFORMANCE & CONSUMPTION

Maximum Speed	14 Kts @ 35 mt/day (@100% MCR)
Service Speed	12 Kts @ 23 mt/day
Economical Speed	10 Kts @ 18 mt/day
Anchor Handling Towing	23 mt / day
DP Operations	15 mt / day
Outport Standby	9 mt / day
Anchor in Port	0.9 mt / day

ANCHOR HANDLING TOWING EQUIPMENT

Bollard Pull	125 tonnes - - 135 tonnes approximately
Anchor Handling Towing Winch	Double drum waterfall Brattvaag SL300/ BSL300W
Line Pull Capacity	300 tonnes @ 1st layer
Brake Holding Capacity	450 tonnes @ 1st layer
Towing Drum Capacity	Wire diameter 76mm x 2000 m length
Anchor Handling Drum	Wire diameter 76mm x 2000 m length
Storage Reel w/spare wire	Wire diameter 76mm x 2000 m length
Storage Reel w/spare wire	Pendant wires & 300m work wire dia 76mm
Rig Chain Gypsy	1 x 76mm 1 x 90mm
Chain Locker	2 x 70 m3
Towing Pins	1 x Karmoy Retractable SWL 500 tonnes
Shark Jaws / Karm Fork	1 x Karmoy Retractable SWL 500 tonnes
Stern roller	Dia 2.2m x Length 5m SWL 500 tonnes

DECK MACHINERY AND MOORING EQUIPMENT

Tugger Winch	2 x SWL 10 tonnes Brattvaag LAKMX41015
Capstan	2 x SWL 10 tonnes Rolls Royce LC-XX41015
Deck Crane	1 x SWL 5ton @ 15m Telescopic Provision Crane
Anchor Windlass	1 x SWL 14 tonnes Brattvaag double gypsy windlass with 2 warping drum
Anchor Chain	2 x dia 46 mm x 440 m studlink anchor chain
Anchor	2 x AC14 HHP 2046Kg anchor

OWNER / MANAGER:
KIM HENG MARINE & OILFIELD PTE LTD

	www.kimheng.com.sg
	enquiry@kimheng.com.sg
Telephone / Fax	(65) 6777 9990 / (65) 6778 9990

BRIDGE NAVIGATION EQUIPMENT

S-Band Radar 10cm ARPA28	1 x Furuno FAR 2117S
X-Band Radar 3cm ARPA28	1 x Furuno FAR 2137S
Auto Pilot	Raytheon Anschutz Pilot Star D NP-2015
Magnetic Compass	Saura ME-150
GPS	Furuno GP-150
Echo Sounder	Furuno FE-700 with printer
AIS	Furuno FA-150
Navtex	Furuno NX-700
Weather Fax	Furuno FAX-408
Anemometer	2 x Young Wind Tracker
Doppler Speed Log	Furuno DS-80

DYNAMIC POSITIONING SYSTEM ABS ⚡ DPS-2

DP Control System	Converteam DP-21
Gyro Compass	3 x Raytheon Anschutz STD22
DGPS Reference System	2 x DGPS Veripos LD3-G1 Cyscan MK2
VRU	1 x TSS DMS RP30
Wind Sensor	3 x Gill Wind Observer 2

BRIDGE COMMUNICATION & MONITORING EQUIPMENT

IMMARSAT Comm C	Furuno FELCOM 15
Marine SSB Radio system	Furuno FS2570C / HS2001
VHF DSC	2 x Furuno FM8800S
Portable VHF (GMDSS)+battery	3 set McMurdo SART S4
EPIRB 406 / 121.5 mhz	McMurdo E3
Satellite Phone	Sailor Thrane & Thrane
Portable VHF Radio	2 x ICOM GM-1500
Towing & Anchoring Handling	Rolls Royce AHT Control panel
Bulk Handling System	Unislip Bulk Handling System
CCTV surveillance system	Anchor Handling & Bridgewatch
PA System	Vingtor 250W
BNWAS System	Fitted
V-SAT Ku Band Intellian V85 with 1024/ 512 MIR 128/64 CIR	

FIRE FIGHTING CAPABILITY - ABS FIFI CLASS 1

Main Ship Fire Pump	1 x 75m3/h @90m head
Emergency Fire Pump	1 x 35m3/h @50m head
Water / Foam Monitor	2 x 1200m3/h @160m Throw
External FiFi Pump	2 x 1500m3/h @14bar
FFS/Scanpump SPP250 x 350 HD Hydrakit system	
FOAM Capacity	21.5m3
Water Curtain Spray System	Accommodation & main deck
Fixed Fire Fighting CO2 system for machinery system	

LIFE SAVING AND STANDBY RESCUE CAPABILITY

Fitted in Compliance with IMO SOLAS (1974) Approved	
SWL 21kN Launching & Recovery System for MOB/FRC	
Fast Rescue Craft FRC-6pax	Zodiac Inflatable Rescue Craft
RESCUE ZONE	2 Zones Scrambling Net fitted

ANTI POLLUTION CAPABILITY

Dispersant Storage Capacity	21.5m3
Dispersant Spray Boom 6Mtr	2 Set
Emergency Anti Pollution Kit	1 set
External Oil Recovery System	Optional IMO TIER 1 Capability

ACCOMMODATION & FACILITIES

Accommodation fitted with Carlyle 5H60C109 Airconditioning System	
25 Cabins -Total 40 Persons	10 x Single Berth 15 x Double Berth
1 x Hospital Cabin Single Berth	Ship Office, DP2 Instrument Cabin
Galley, Mess Room, Recreation Room, Gymnasium Room	
2 x JCU IVY Refrigeration fitted Cold Room , 1 x dry provision store	
Laundry Room and Workwear PPE Changeout Zone	

ENVIRONMENTAL IMO MARPOL COMPLIANCE

WCB-50 pax holding capacity Sewage Treatment Plant	
15-ppm Taiko Kikai Oily Water Separator of 1m3/hr	
Water Maker Sea Recovery Coral Sea 2800 Rev Osmosis 10 m3/day	
Domestic Sanitary system 500Litres Hydrophore tank unit	
Anti Air Pollution Engines Exhaust System	
Bulk Cargo load/discharge station spill containment	