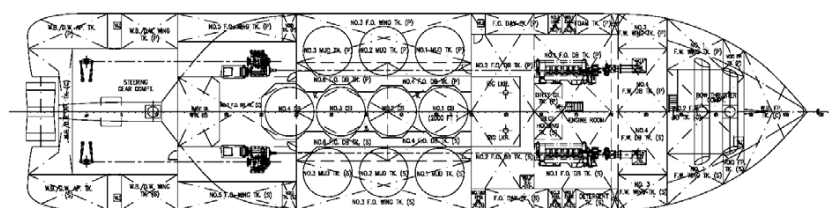
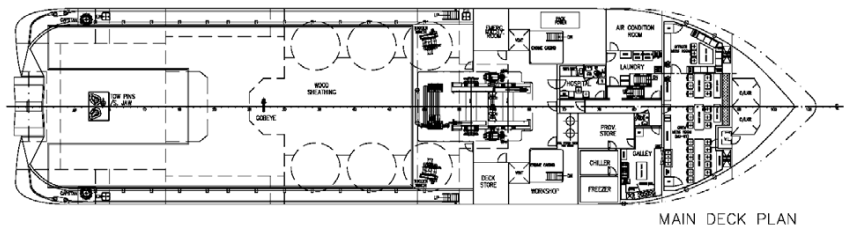
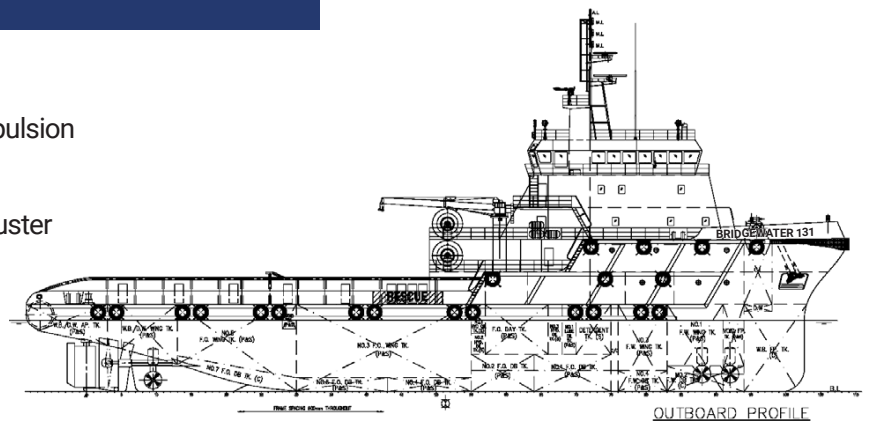




## 10,800BHP 130TBP DP2 FIFI 1 Anchor Handling Tug Supply Standby Escort Rescue Tug

### Features

- ▶ 10,800 BHP ( 8,000KW ) Controllable Pitch Propulsion
- ▶ 120MT to 135MT Bollard Pull
- ▶ 2 x 800kw Bow Thruster & 1 x 800kw Stern Thruster
- ▶ Fuel Capacity: 1200 MT // Clear Deck : 500 M2
- ▶ Deadweight Capacity : 2180MT
- ▶ Dynamic Positioning DP-2 System
- ▶ Fire-Fighting FiFi Class 1
- ▶ CCTV Ship Security & Operations
- ▶ V-SAT Ku Band Intellian V85
- ▶ Anti Pollution Oil Spill Response
- ▶ Environmental IMO Compliance
- ▶ Accommodation Total 40 Berths
- ▶ 27 Cabins c/w Ensuite Bathroom
- ▶ 10 Single & 15 Double Cabin
- ▶ 1 Hospital Cabin
- ▶ 1 Ship Office Cabin
- ▶ Galley with Messroom for 30 persons
- ▶ Recreation & Laundry Room

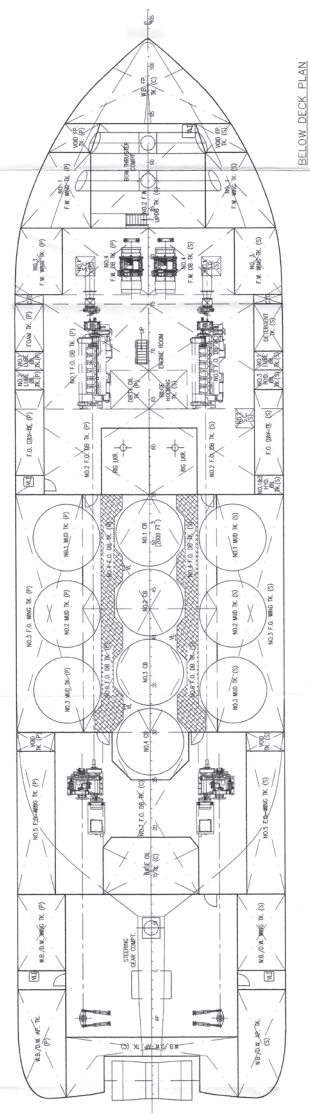
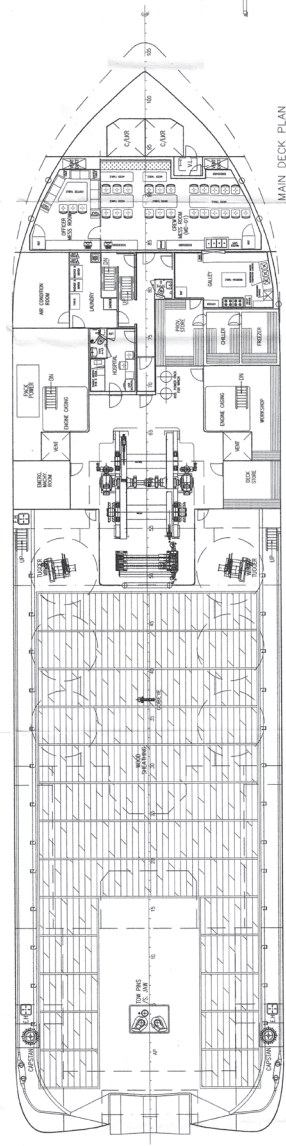
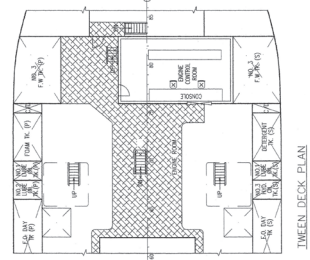
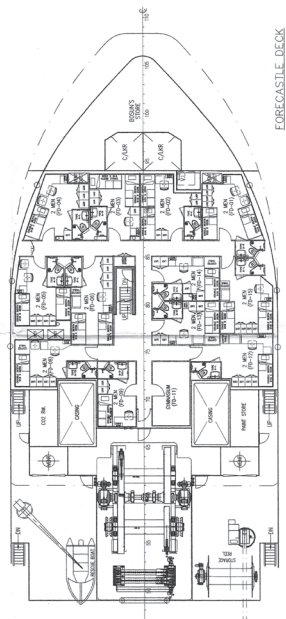
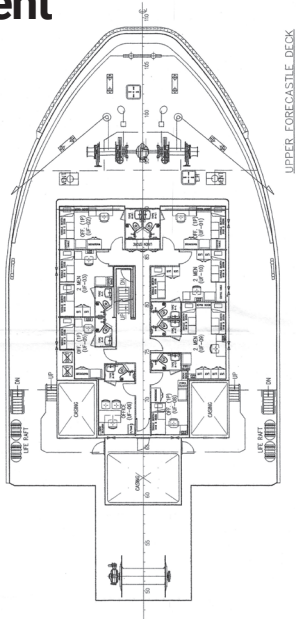
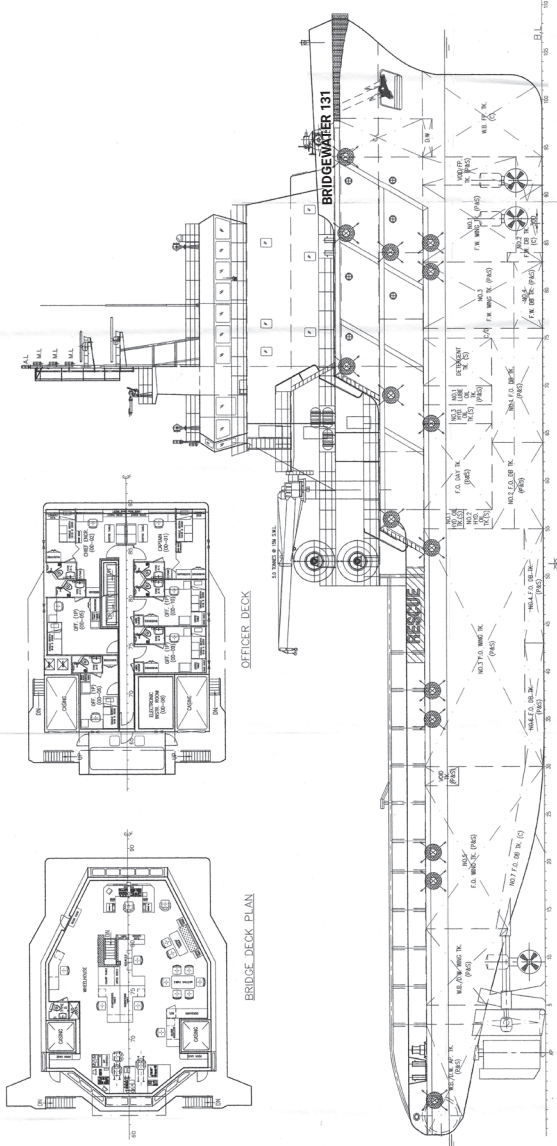


### General Arrangement

**PRINCIPAL DIMENSIONS**

70,000 M  
 20,000 M  
 16,800 M  
 12,000 M  
 6,100 M  
 2000 TONS  
 1250 M<sup>3</sup>  
 490 M<sup>3</sup>  
 335 M<sup>3</sup>  
 105 M<sup>3</sup>  
 50 M<sup>3</sup>  
 800 TONS  
 226 M<sup>3</sup>  
 2 X 4200 KW  
 14.0 KNOTS  
 130 TONS  
 40 MEN  
 7.57/M<sup>2</sup>  
 4x2000 HP=8000 FT<sup>3</sup>  
 2 X 4200 KW  
 14.0 KNOTS  
 130 TONS  
 40 MEN

CLASS & NOTATION : ABS ★ A1 Towing Vessel, Fire Fighting Vessel Class 1,  
 Offshore Support Vessel, Ⓞ, ★AMS, ★DP-2



**MAIN PARTICULARS**

|                           |   |
|---------------------------|---|
| Vessel Name               | <b>BRIDGEWATER 131</b>  |
| IMO No.                   | 9555412   |
| Year Built                | 2009-12   |
| Place Built               | Fujian Southeast Shipyard-China   |
| Port - Flag Registry      | Port Kelang, Malaysia   |
| Callsign                  | 9MYE2   |
| Official No.              | 336814  |
| GRT / NRT                 | 2708  |
| ABS Class Certificate No. | 812   |
| Class Notation            | <b>A B S</b> ⚡A1 Anchor Handling Towing Vessel FiFi Class 1<br>Offshore Support Vessel (E) ⚡AMS ⚡DPS-2<br>Unrestricted Navigation |

**DIMENSIONS**

|                         |                |
|-------------------------|----------------|
| Length - OA             | 70.00 M        |
| Length - BP             | 64.00 M        |
| Breadth - Moulded       | 16.80 M        |
| Depth - Moulded         | 7.50 M         |
| Draft - Moulded         | 6.10 M         |
| Deadweight Max Capacity | 2180 tonnes    |
| Deck cargo capacity     | 700 tonnes     |
| Main Cargo Deck (L x B) | 33.5M X 13.5M  |
| Deck Strength           | 7.5 Tonnes /M2 |
| Deck Area               | 500 M2         |

**BULK CAPACITIES**

|                       |          | TRANSFER RATE         |
|-----------------------|----------|-----------------------|
| Fuel Oil              | 1221 m3  | 1 x 150m3/h @75m head |
| Fresh Water           | 393.5 m3 | 1 x 150m3/h @75m head |
| Ballast/Drill Water   | 339.7 m3 | 1 x 150m3/h @75m head |
| Liquid Mud / Brine    | 490 m3   | 2 x 75m3/h @75m head  |
| Base Oil              | 104 m3   | 1 x 61m3/h @90m head  |
| Dry bulk mud / cement | 226 m3   | 2 x 18m3/h @80psi     |

**MACHINERY**

|                             |  |
|-----------------------------|--|
| Main Engine Propulsion      | 2 x 4000kw@750rpm Wartsila 8L32 Diesel Engine<br>CPP Propeller in Kort Nozzle Total 10800bhp |
| Bow Tunnel Thruster CPP     | 2 x 600kw(800bhp) Wartsila CT175H-D 9.5te thrust   |
| Stern Tunnel Thruster CPP   | 1 x 600kw(800bhp) Wartsila CT175H-D 9.5te thrust   |
| Auxilliary Diesel Generator | 2 x 350kw Leroy 415V/3P/50Hz Caterpillar C18   |
| Shaft Generator             | 2 x 1600kw 415V/3P/50Hz Marelli Motori   |
| Emergency Generator         | 1 x 65kw/415V/3P/50Hz Caterpillar C4.4   |
| Bulk Air Compressors        | 2 x Airman SWS125/18m3/h x 80 PSI  |
| Service Air Compressors     | 2 x Sperre PL2 /77 3.3Mpa  |

**PERFORMANCE & CONSUMPTION**

|                        |                                |
|------------------------|--------------------------------|
| Maximum Speed          | 14 Kts @ 35 mt/day (@100% MCR) |
| Service Speed          | 12 Kts @ 23 mt/day             |
| Economical Speed       | 10 Kts @ 18 mt/day             |
| Anchor Handling Towing | 23 mt / day                    |
| DP Operations          | 15 mt / day                    |
| Outport Standby        | 9 mt / day                     |
| Anchor in Port         | 0.9 mt / day                   |

**ANCHOR HANDLING TOWING EQUIPMENT**

|                              |  |
|------------------------------|--|
| Bollard Pull                 | 125 tonnes - - 135 tonnes approximately        |
| Anchor Handling Towing Winch | Double drum waterfall Brattvaag SL300/ BSL300W |
| Line Pull Capacity           | 300 tonnes @ 1st layer                         |
| Brake Holding Capacity       | 450 tonnes @ 1st layer                         |
| Towing Drum Capacity         | Wire diameter 76mm x 2000 m length             |
| Anchor Handling Drum         | Wire diameter 76mm x 2000 m length             |
| Storage Reel w/spare wire    | Wire diameter 76mm x 2000 m length             |
| Storage Reel w/spare wire    | Pendant wires & 300m work wire dia 76mm        |
| Rig Chain Gypsy              | 1 x 76mm 1 x 90mm                              |
| Chain Locker                 | 2 x 70 m3                                      |
| Towing Pins                  | 1 x Karmoy Retractable SWL 500 tonnes          |
| Shark Jaws / Karm Fork       | 1 x Karmoy Retractable SWL 500 tonnes          |
| Stern roller                 | Dia 2.2m x Length 5m SWL 500 tonnes            |

**DECK MACHINERY AND MOORING EQUIPMENT**

|                 |   |
|-----------------|---|
| Tugger Winch    | 2 x SWL 10 tonnes Brattvaag LAKMX41015                                |
| Capstan         | 2 x SWL 10 tonnes Rolls Royce LC-XX41015                              |
| Deck Crane      | 1 x SWL 5ton @ 15m Telescopic Provision Crane                         |
| Anchor Windlass | 1 x SWL 14 tonnes Brattvaag double gypsy windlass with 2 warping drum |
| Anchor Chain    | 2 x dia 46 mm x 440 m studlink anchor chain                           |
| Anchor          | 2 x AC14 HHP 2046Kg anchor  |

**OWNER / MANAGER:**
**KIM HENG MARINE & OILFIELD PTE LTD**

|                 |                                 |
|-----------------|---------------------------------|
|                 | www.kimheng.com.sg              |
|                 | enquiry@kimheng.com.sg          |
| Telephone / Fax | (65) 6777 9990 / (65) 6778 9990 |

**BRIDGE NAVIGATION EQUIPMENT**

|                          |  |
|--------------------------|--|
| S-Band Radar 10cm ARPA28 | 1 x Furuno FAR 2117S                   |
| X-Band Radar 3cm ARPA28  | 1 x Furuno FAR 2137S                   |
| Auto Pilot               | Raytheon Anschutz Pilot Star D NP-2015 |
| Magnetic Compass         | Saura ME-150                           |
| GPS                      | Furuno GP-150                          |
| Echo Sounder             | Furuno FE-700 with printer             |
| AIS                      | Furuno FA-150                          |
| Navtex                   | Furuno NX-700                          |
| Weather Fax              | Furuno FAX-408                         |
| Anemometer               | 2 x Young Wind Tracker                 |
| Doppler Speed Log        | Furuno DS-80                           |

**DYNAMIC POSITIONING SYSTEM ABS ⚡ DPS-2**

|                       |                                    |
|-----------------------|------------------------------------|
| DP Control System     | Converteam DP-21                   |
| Gyro Compass          | 3 x Raytheon Anschutz STD22        |
| DGPS Reference System | 2 x DGPS Veripos LD3-G1 Cyscan MK2 |
| VRU                   | 1 x TSS DMS RP30                   |
| Wind Sensor           | 3 x Gill Wind Observer 2           |

**BRIDGE COMMUNICATION & MONITORING EQUIPMENT**

|   |                               |
|---|-------------------------------|
| IMMARSAT Comm C   | Furuno FELCOM 15              |
| Marine SSB Radio system                                   | Furuno FS2570C / HS2001       |
| VHF DSC   | 2 x Furuno FM8800S            |
| Portable VHF (GMDSS)+battery                              | 3 set McMurdo SART S4         |
| EPIRB 406 / 121.5 mhz                                     | McMurdo E3                    |
| Satellite Phone   | Sailor Thrane & Thrane        |
| Portable VHF Radio  | 2 x ICOM GM-1500              |
| Towing & Anchoring Handling                               | Rolls Royce AHT Control panel |
| Bulk Handling System                                      | Unislip Bulk Handling System  |
| CCTV surveillance system                                  | Anchor Handling & Bridgewatch |
| PA System   | Vingtor 250W                  |
| BNWAS System  | Fitted                        |
| V-SAT Ku Band Intellian V85 with 1024/ 512 MIR 128/64 CIR |                               |

**FIRE FIGHTING CAPABILITY - ABS FIFI CLASS 1**

|   |                           |
|---|---------------------------|
| Main Ship Fire Pump                                 | 1 x 75m3/h @90m head      |
| Emergency Fire Pump                                 | 1 x 35m3/h @50m head      |
| Water / Foam Monitor                                | 2 x 1200m3/h @160m Throw  |
| External FiFi Pump                                  | 2 x 1500m3/h @14bar       |
| FFS/Scanpump SPP250 x 350 HD Hydrakit system        |                           |
| FOAM Capacity                                       | 21.5m3                    |
| Water Curtain Spray System                          | Accommodation & main deck |
| Fixed Fire Fighting CO2 system for machinery system |                           |

**LIFE SAVING AND STANDBY RESCUE CAPABILITY**

|   |                                |
|---|--------------------------------|
| Fitted in Compliance with IMO SOLAS (1974) Approved |                                |
| SWL 21kN Launching & Recovery System for MOB/FRC    |                                |
| Fast Rescue Craft FRC-6pax                          | Zodiac Inflatable Rescue Craft |
| RESCUE ZONE   | 2 Zones Scrambling Net fitted  |

**ANTI POLLUTION CAPABILITY**

|                              |                                |
|------------------------------|--------------------------------|
| Dispersant Storage Capacity  | 21.5m3                         |
| Dispersant Spray Boom 6Mtr   | 2 Set                          |
| Emergency Anti Pollution Kit | 1 set                          |
| External Oil Recovery System | Optional IMO TIER 1 Capability |

**ACCOMMODATION & FACILITIES**

|  |                                     |
|--|-------------------------------------|
| Accommodation fitted with Carlyle 5H60C109 Airconditioning System    |                                     |
| 25 Cabins -Total 40 Persons  | 10 x Single Berth 15 x Double Berth |
| 1 x Hospital Cabin Single Berth                                      | Ship Office, DP2 Instrument Cabin   |
| Galley, Mess Room, Recreation Room, Gymnasium Room                   |                                     |
| 2 x JCU IVY Refrigeration fitted Cold Room , 1 x dry provision store |                                     |
| Laundry Room and Workwear PPE Changeout Zone                         |                                     |

**ENVIRONMENTAL IMO MARPOL COMPLIANCE**

|   |  |
|---|--|
| WCB-50 pax holding capacity Sewage Treatment Plant            |  |
| 15-ppm Taiko Kikai Oily Water Separator of 1m3/hr             |  |
| Water Maker Sea Recovery Coral Sea 2800 Rev Osmosis 10 m3/day |  |
| Domestic Sanitary system 500Litres Hydrophore tank unit       |  |
| Anti Air Pollution Engines Exhaust System                     |  |
| Bulk Cargo load/discharge station spill containment           |  |