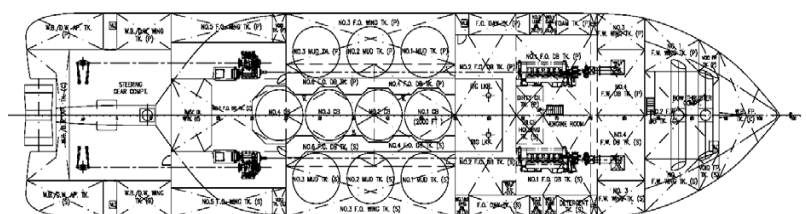
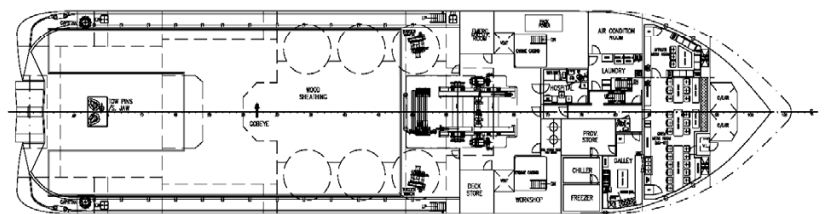
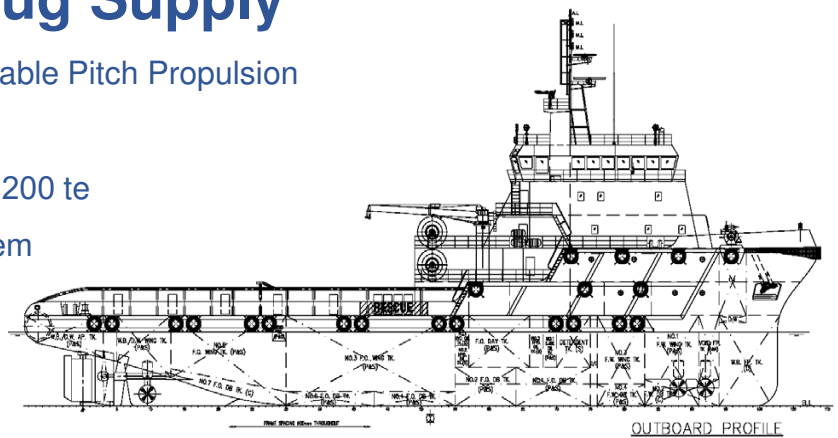




## Anchor Handling Tug Supply

- 5,150 BHP ( 3,842KW ) Controllable Pitch Propulsion
- 60 MT Bollard Pull
- Line Pull 150 te / Brake Holding 200 te
- Dynamic Positioning DP-1 System
- Fire-Fighting FiFi Class 1
- Clear Deck 340m<sup>2</sup>
- Deadweight Capacity 1,356MT
- Anti Pollution Oil Spill Response
- Standby & Rescue
- Environmental IMO Compliance
- Accommodation Total 40 Men
  - 4 x 1-berth, 3 x 2-berth,
  - 8 x 4 Berth
  - 1 Ship Office Cabin
  - Mess & Galley
  - 1 Hospital Cabin



MAIN PARTICULARS		Owners / Managers	RUHM MAZU SDN BHD
Vessel Name	MAZU 60	E-mail	operation@ruhmmazu.com
IMO No.	9563366	Telephone / Fax	(60) 341475450 / (60) 34162 6450
Year Built	2009		
Place Built	Chongqing Jinlong Shipbuiding Co., LTD		
Port - Flag Registry	Port Kelang	<b>BRIDGE NAVIGATION EQUIPMENT</b>	
Callsign/Official No.	9WNC9 / 900036	S-Band Radar 10cm ARPA28	1 x Furuno FR 1510 MK3
MMSI	563 3690000	X-Band Radar 3cm ARPA28	1 x Furuno FAR 2117
Gross Tonnage	1678	Auto Pilot	Raytheon Anschutz Pilotstar D
Net Tonnage	503	Magnetic Compass Class A	2 x Cassens & Plath Reflecta1
Class Notation	A B S * A1 Anchor Handling Towing Vessel FiFi Class 1 Offshore Support Vessel ( E ) * AMS * DPS-1 Unrestricted Navigation	GPS	Furuno GP-80
		Echo Sounder	Furuno FE-700
		AIS	Furuno FA-150
		Navtex	Furuno NX-700B
		Weather Fax	Furuno FAX-408
		Anemometer	1 x Raymarine ST60+
		Doppler Speed Log	Furuno DS-80
		Wind Sensor	3 x Gill Wind Observer 2
<b>DIMENSIONS</b>		<b>DYNAMIC POSITIONING SYSTEM ABS * DPS-1</b>	
Length - OA	59.30 M	Magnetic Compass CPLATH	2 x Cassens & Plath Reflecta1
Length - BP	52.20 M	Gyro Compass	1 x Raytheon Anschutz STD-22
Breadth - Moulded	15.00 M	DGPS Reference System	1 x Furuno GP-150
Depth - Moulded	6.10 M	Kongsberg Cjoy Joystick	fitted
Draft - Max	4.95 M	<b>BRIDGE COMMUNICATION &amp; MONITORING EQUIPMENT</b>	
Displacement / Deadweight	2897.5 tonnes / 1356 tonnes @4.95m approx	IMMARSAT Comm C	Furuno FELCOM 15
Deck cargo capacity	500 tonnes approx	Marine SSB Radio system	Furuno FS2571C
Main Cargo Deck ( L x B )	27.5M X 12.4M	VHF DSC	2 x Furuno FM8800S
Deck Strength	7.5 Tonnes /M2	Portable VHF (GMDSS)+battery	3 set Samsung STV-160
Deck Area	340 M2	EPIRB 406 / 121.5 mhz	McMurdo E5
		GMDSS (Area 3)	Furuno RC-1500T 1 T
<b>BULK CAPACITIES</b>		Satellite Phone	Sailor Thrane & Thrane
		Transfer Rate	2 x ICOM GM-1500
Fuel Oil	540 m3	Portable VHF Radio	Rolls Royce AHT Control panel
Fresh Water	373.9 m3	Towing & Anchoring Handling	Bulk Handling System
Ballast/Drill Water	396.5 m3	Bulk Handling System	Fitted
Liquid Mud / Brine / Base Oil	413 m3	CCTV Display Panel	Bridge Watch AHTS Operations
Dry bulk mud / cement	186.9 m3	PA System / Sound Telephone	VINGTOR ACM-M36 250W / VSP
Foam (Fire fighting)	13.3 m3	BNWAS System	Fitted
Detergent ( Oil Pollution )	13.3 m3	Multi Gas Detector system	Fitted
Dirty Oil Tk // Bilge Oil Tk	6.5 m3 // 6.5 m3 each	<b>FIRE FIGHTING CAPABILITY - ABS FiFi Class 1</b>	
		Main Ship Fire Pump	1 x 75m3/h @90m head
<b>MACHINERY</b>		Emergency Fire Pump	1 x 60m3/h @70m head
Main Engine Propulsion	2 x 1921kw(2575BHP)@1600rpm CAT3516B-HD Engine	Water / Foam Monitor	2 x 1200m3/h @160m Throw
		External FiFi Pump	2 x 1500m3/h @14bar
Bow Tunnel Thruster FPP	1 x 390kw Kawasaki KT-55B3 6.0 t thruster	FOAM Mixer /Capacity	13m3
Auxilliary Diesel Generator	3 x 350kw CAT C18 450V/3P/50Hz	Water Curtain Spray System	Accommodation & main deck
Shaft Generator	2 x 450kw Leroy Somer LSAM471L11 440V/3P/50Hz	Fixed Fire Fighting CO2 system for machinery system	
Emergency Generator	1 x 65 kw/450V/3P/50Hz Perkin Generator	Fire Detection & Alarm Control	Fitted
		<b>LIFE SAVING AND STANDBY RESCUE CAPABILITY</b>	
		Fitted in Compliance with IMO SOLAS (1974) Approved	
<b>PERFORMANCE &amp; CONSUMPTION</b>		SWL 21kN Launching & Recovery System for MOB/FRC	
Maximum Speed	13 Kts @ 20 m3/24 hr	Fast Rescue Craft FRC	6 Pax FRP boat JY45KR OB Mercury 25 hp
Service Speed	10 Kts @ 16 m3/24 hr	RESCUE ZONE	2 Zones Scrambling Net fitted
Economical Speed	8 Kts @ 12 m3/24 hr	<b>ANTI POLLUTION CAPABILITY</b>	
Anchor Handling Towing	18 m3 / day	Dispersion Storage Capacity	21.5m3
Outport Standby	6 m3 / day	Dispersion Spray Boom 6Mtr	2 Set
Anchor in Port	2.5 m3 / day	Emergency Anti Pollution Kit	1 set
		External Oil Recovery System	Optional IMO TIER 1 Capability
<b>ANCHOR HANDLING TOWING EQUIPMENT</b>		<b>ACCOMMODATION &amp; FACILITIES</b>	
Bollard Pull	72.8 tonnes	Accommodation Centralised AirCon	4 x 1-berth, 3 x 2-berth, 8 x 4 Berth
Anchor Handling Towing Winch	MEP System Double Drum Hydraulic Driven,	15 Cabins -Total 42 Persons	Ship Office, Hospital, Meeting room
Line Pull Capacity	150 tonnes @ 1st layer	Galley, Mess Room, Utility Store, Recreation Room, Gymnasium Room,	
Brake Holding Capacity	200 tonnes @ 1st layer	2 x Refrigeration fitted Cold Room , 1 x dry provision store	
Towing Drum Capacity	Wire diameter 56mm x 1000 m length	Laundry Room and Workwear PPE Changeout Zone	
Anchor Handling Drum	Wire diameter 56mm x 1000 m length	<b>ENVIRONMENTAL IMO MARPOL COMPLIANCE</b>	
Storage Reel w/spare wire	Wire diameter 56mm x 1000 m length	15-ppm Oily Water Separator FORWIN ZYFM(NJ)-1 1.0M3/HR	
Hydraulic Bollard	2 x Triplex P-150 Quick Release 150Mt	Sewage Treatment 1 x 50 pax Jiangsu Nanji WCB-50	
Towing Pins	1 x Karmfork Retractable SWL 160 tonnes	RO Water Maker 1 x 5t/day Peter Taboada SW-Y 30/52	
Shark Jaws for up to 3.1/2"	1 x Karmfork Retractable SWL 300 tonnes	Anti Air Pollution Engines Exhaust System	
		Bulk Cargo load/discharge station spill containment	
Stern roller	5.0m x 1.6m diameter SWL 200 tonnes		
<b>DECK MACHINERY AND MOORING EQUIPMENT</b>			
Tugger Winch	2 X SWL10t MEP-10/25 90Mx 19mm wire		
Capstan	2 x SWL 5 tonnes MEP-HC-5		
Deck Crane West Marine	WME-FC3090 Hydraulic crane SWL 3 tonne @9m		
Anchor Windlass	1 x SWL 9t MEP double gypsy windlass with 2 warping drum		
Anchor Chain	2 x dia 38 mm x 220m (17 shackle) anchor chain		
Anchor	2 x AC14 HHP 1490Kg anchor		

