

**GENERAL**

Place of Build	Fujian Southeast Shipyard, China
Vessel Type	PSV
Year Built	2015
Flag	Malaysia
IMO No	9689201
Call Sign	9WVK4
Class	ABS + A1 (E) OFFSHORE SUPPORT VESSEL (FFV1, OSR-C2) + AMS + DPS-2, ACCU, UWILD, ENVIRO, GREENPASSPORT SPS 2008 - comply

PRINCIPAL DIMENSIONS

Length Overall	80.00 metres
Breadth Moulded	18.40 metres
Max Draft	6.35 metres
Deadweight	3750 tonnes
Gross Tonnage	2950 tonnes
Net Tonnage	885 tonnes

MACHINERY & PROPULSION

Main Engine	2 x MAK 2400 KW
Propulsion System	Twin CPP rudder propellers/azimuth thrusters
Total BHP	6500BHP
Bow Thruster	2 x 12 tons (800KW), electric driven
Main Generators	3 x 500KW diesel driven
Shaft Generator	2 x 1230KW main engine driven
Emergency Generator	1 x 95KW diesel driven

PERFORMANCES

Fuel Consumption @ 14 kn	Approximately 16.8 mt/day
Fuel Consumption @ 11 kn	Approximately 7.1 mt/day
Fuel Consumption at Standby	Approximately 1.0 mt/day
Fuel Type	ISO 8217: 2005 DMA or later revisions

CARGO CAPABILITIES

Fresh Water	550 m3 - 150m3/hr @ 80m head
Drill Water	1500 m3 - 100m3/hr @ 80m head
Fuel Capacity (100%)	850 m3 - 150m3/hr @ 80m head
Liquid Mud / Brine / ORO	750 m3 - 2 x 75m3/hr @ 80m head
Dry Bulk	226 m3 (4 x 2000 ft3) - 20m3/min
Methanol	190 m3 - 50m3/hr @ 9bar
Foam	14 m3
Detergent	14 m3
Clear Deck Area	750 m2
Deck Cargo	1500 tonnes
Deck Loading	5.5 tonnes/m2
Fresh Water Maker	2 x 10 tonnes per day

COMMUNICATIONS EQUIPMENT

HF radio	Furuno Model RC-1800T
VHF Radio	Furuno FM-8800S
Portable VHF Radio	3 x McMurdo Model R2 GMDSS
Satellite EPIRB	McMurdo Model SMARTFIND E5
Inmarsat	Inmarsat-C with EGC
Navtex Receiver	Furuno NX-700A (GMDSS)
SART	2 x McMurdo S4 Rescue SART
Automatic Identification System (AIS)	Furuno FA-150

NAVIGATION EQUIPMENT

Radar No. 1	Furuno FAR-2117-D, X-Band
Radar No. 2	Furuno FAR-2137S-D, S-Band
GPS	2 x Furuno, GP-150
Echo Sounder	Furuno , FE-700
Auto Pilot	Anschutz PilotStar D
Gyro Compass	3 x Anschutz Gyro
Magnetic Compass	Anschutz Magnetic Standard 22
Dynamic Positioning	Kongsberg DPS-2 K-Pos DP-21
Joystick Control	Kongsberg cJoy system

DECK MACHINERY

Tuggers	2 x 10 tonnes @ 24m/min
Capstans	2 x 10 tonnes @ 25m/min
Deck Crane	3 tonnes SWL @ 10m

LIFE SAVING APPARATUS

Liferafts	6 x 25 men and 2 x 15 men life rafts
Rescue Boat	1 x 6 men rescue boat with 25HP OBM

EXTERNAL FIRE FIGHTING

Capacity	ABS Fifi Class 1 - 3000 m3 per hr
Monitor	2 x 1200 m3 per hr
Throw x Height	120 m x 45 m

ACCOMMODATION

Crew	16
Passengers	36
Total	52
Hospital	1

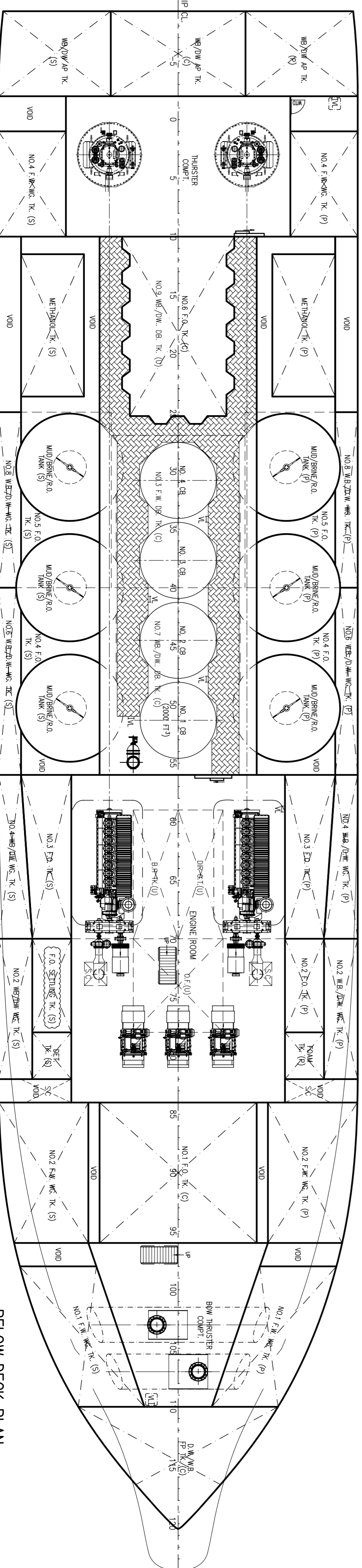
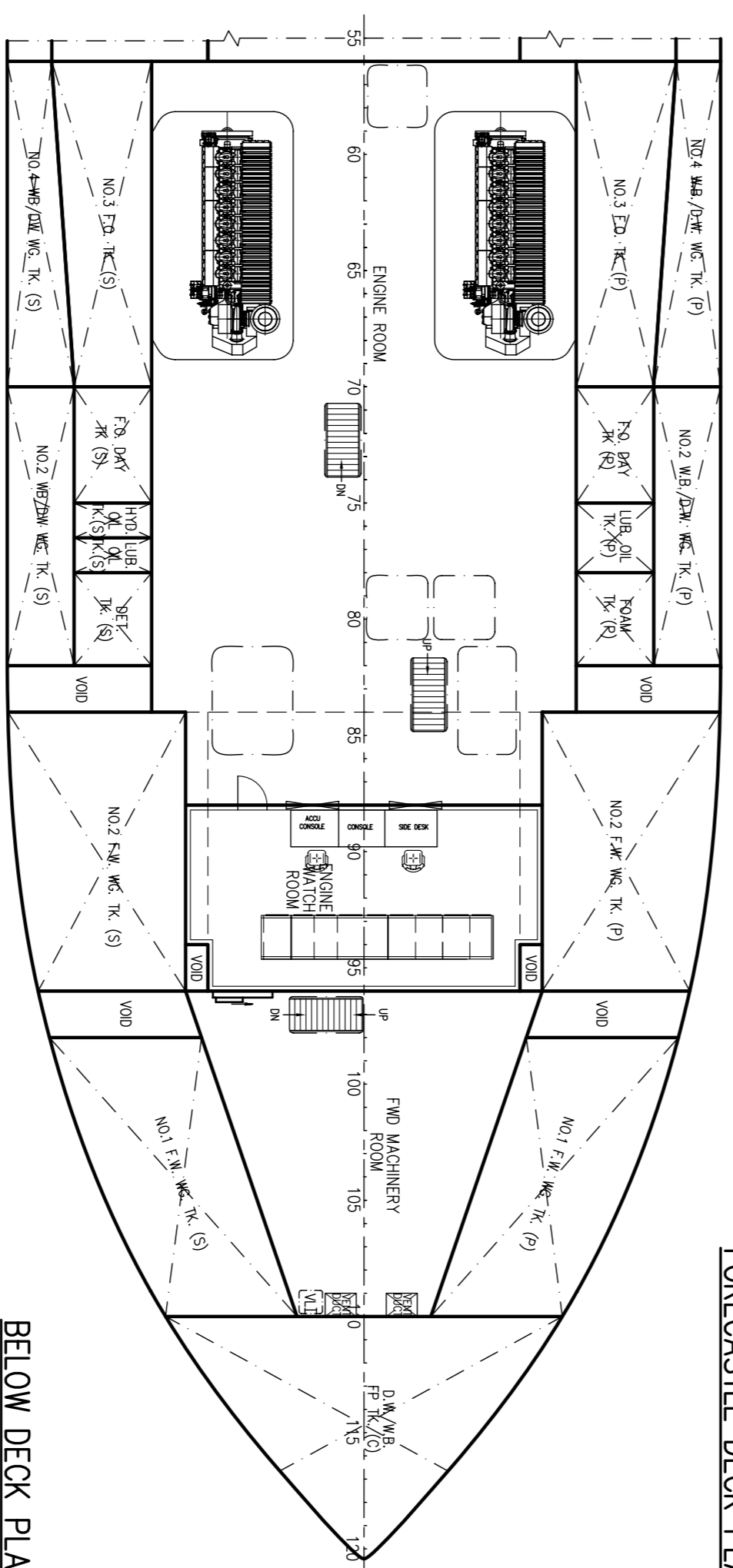
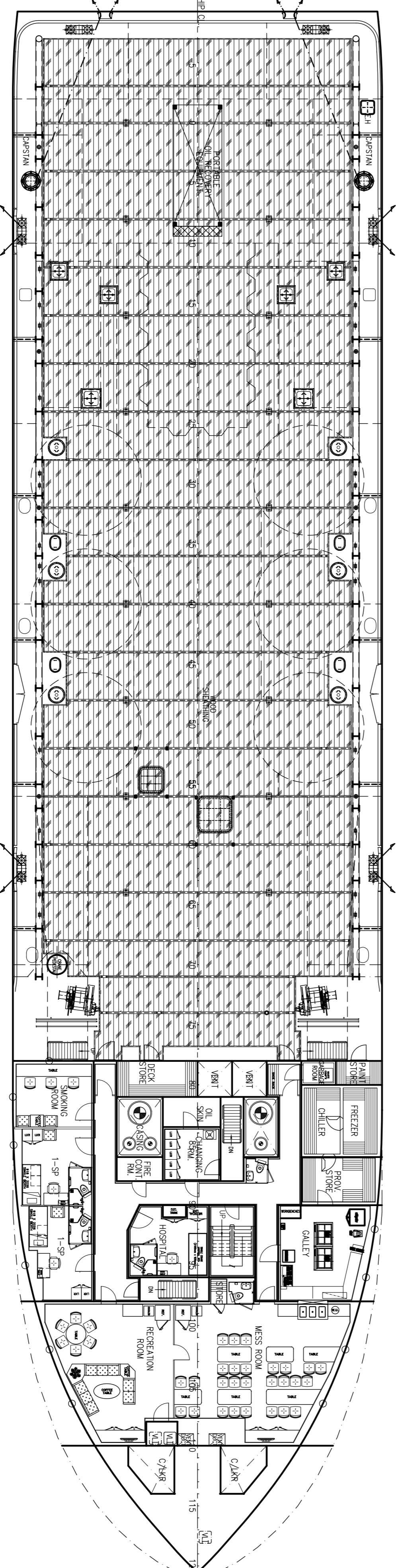
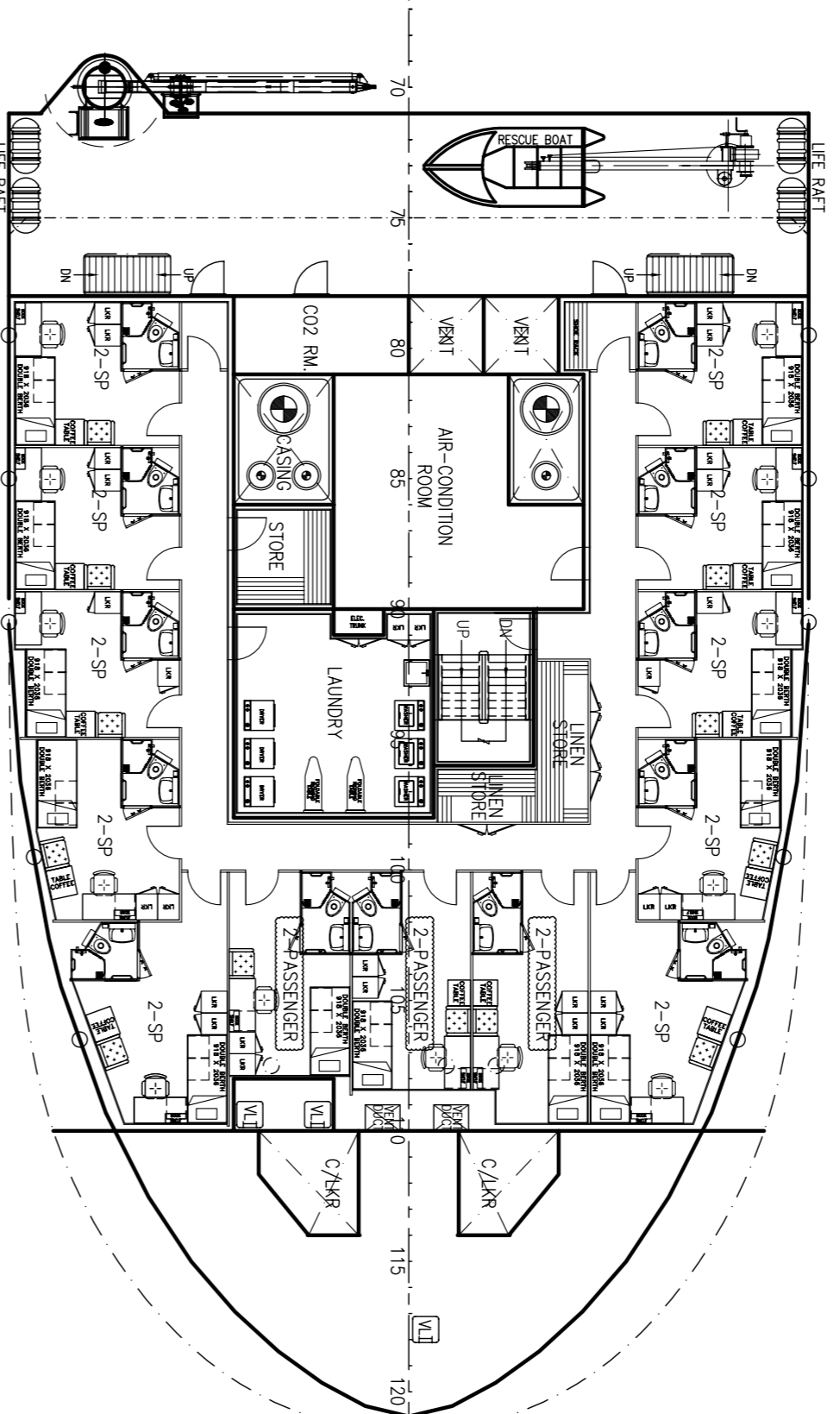
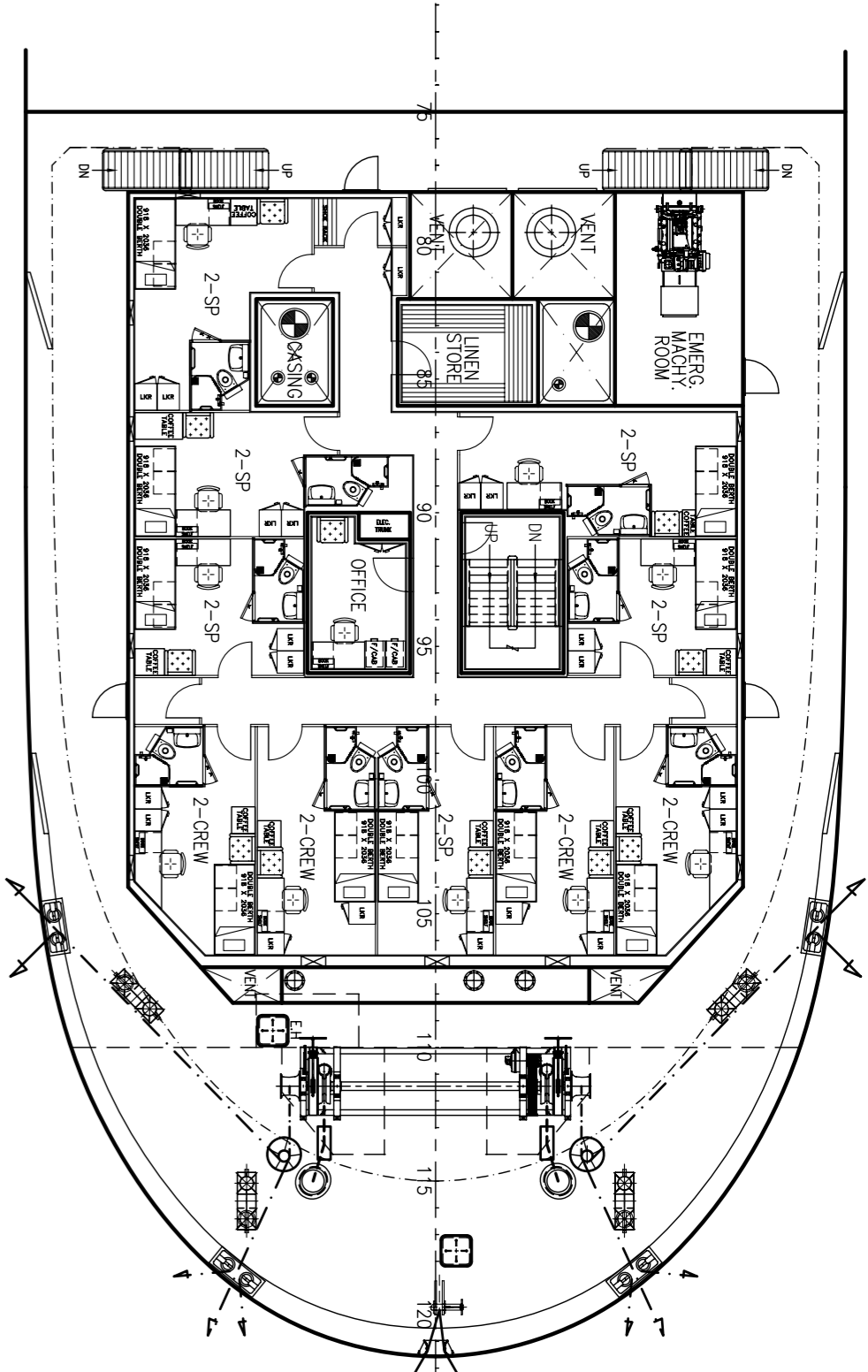
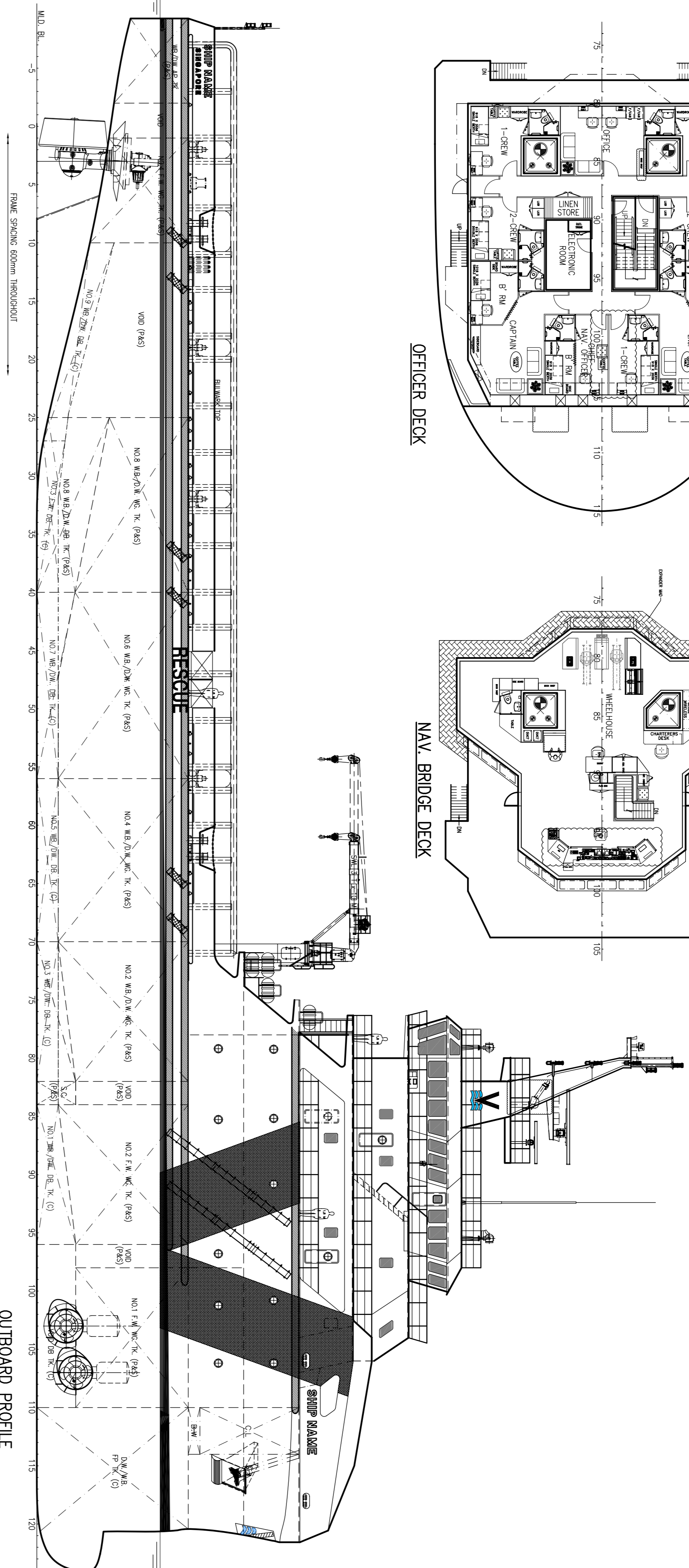
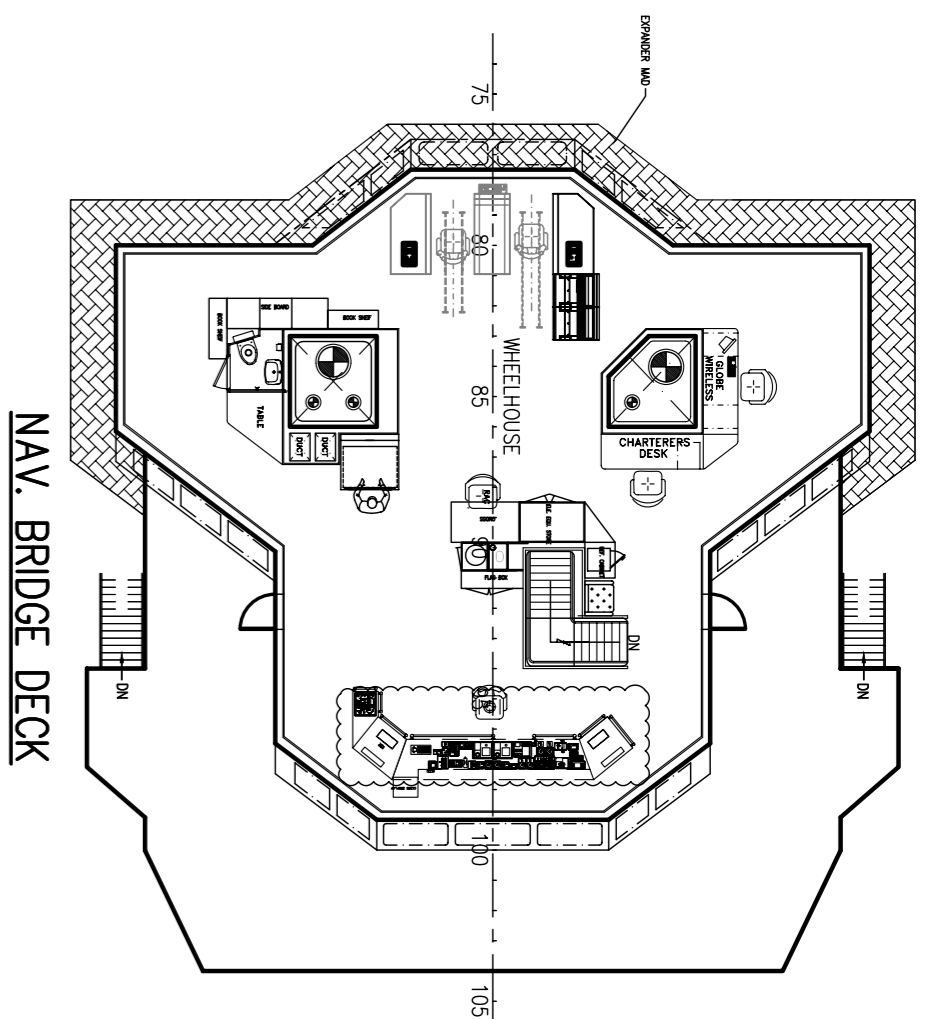
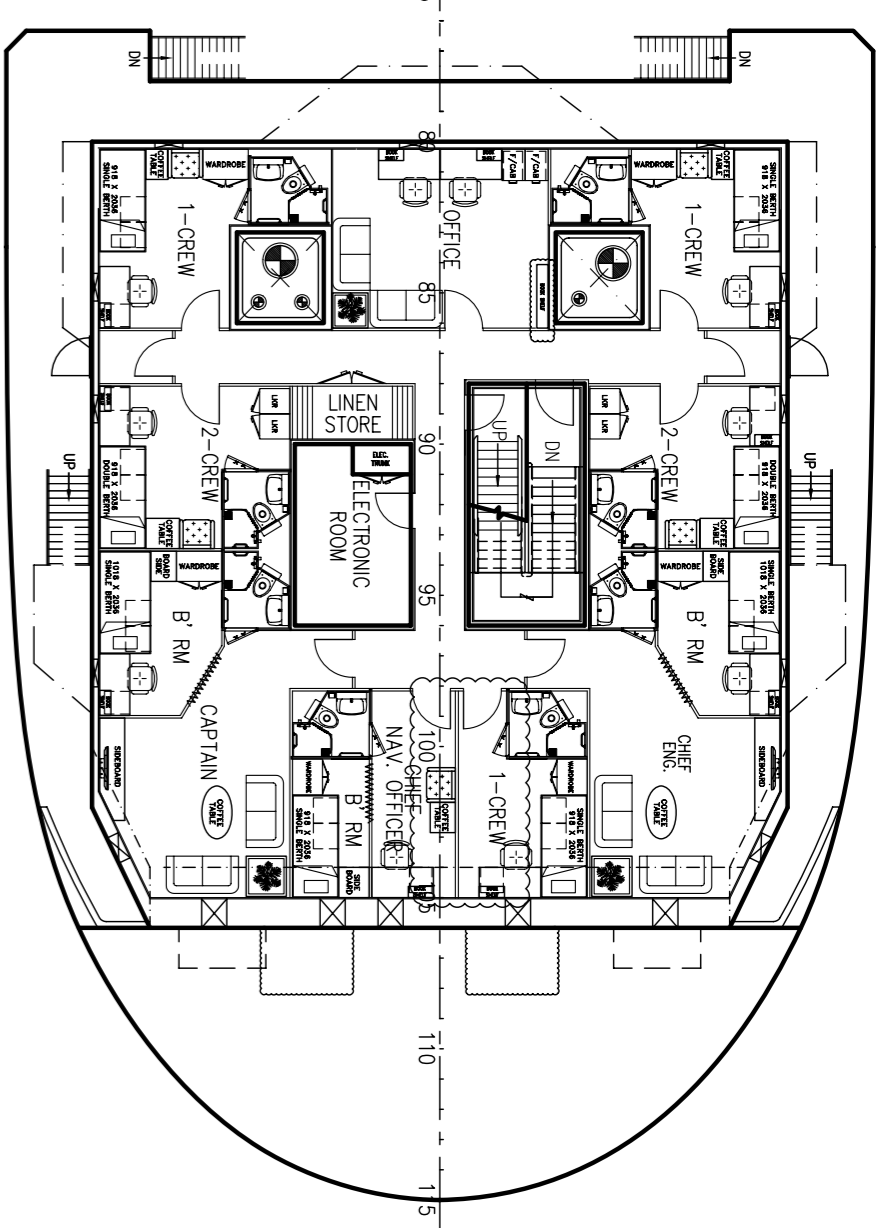
This technical specification sheet is subject to change without notice. Whilst every effort has been made to ensure the accuracy of the information presented, no guarantees of accuracy can be given. For enquires, kindly email us at ops@ruhmmarine.com or ops@ruhmmarine.com.

**RUHM MARINE SDN BHD**

Unit 1-7, Saville@Melawati, Jalan Kalam Air
Desa Melawati, 53100 Kuala Lumpur
Tel: +603-4147 5450 / Fax: +603- 41626450

www.ruhmmarine.com

KC-35HL PSV



PRINCIPAL DIMENSIONS

LENGTH (O.A.)	90.00 M
LENGTH (B.P.)	72.38 M
LENGTH (M.L.D.)	76.40 M
BEAM (M.L.D.)	7.80 M
DEPTH (M.L.D.)	2.00 M
MAX. DRAFT (M.L.D.)	7.50 M
TOTAL DWT	850 M ³
FUEL OIL	550 M ³
FRESH WATER	750 M ³
MUD/BRINE /R.O.	200 M ³
WINDLASS	200 M ³
DECK CARBO (A&B)	1500 TONS
DRY BULK TANKS (4x2000 FT ³)	226 M ³
MAIN PROPULSION	2 X 2400 KW
SPEED (TRIALS)	13.0 KNOTS
CREW	34 MEN
SPECIAL PERSONNEL	6 MEN
PASSENGER	-

THIS DOCUMENT AND THE INFORMATION IT CONTAINS IS CONFIDENTIAL PROPERTY OF FUJIAN SOUTHEAST SHIPBUILDING CO., LTD. IT IS NOT TO BE COPIED, REPRODUCED, OR IN ANY MANNER DISCLOSED TO ANY THIRD PARTY WITHOUT THE WRITTEN CONSENT OF FUJIAN SOUTHEAST SHIPBUILDING CO., LTD.

CLASSIFICATION	DIVISION	DATE	SCALE	PLANNING NUMBER	REV.
3	DIVISION	24-03-13	1:150	KCM/0692(B)-01	3

GENERAL ARRANGEMENT

PROJECT: **80m PLATFORM SUPPLY VESSEL**

CONSULTANT: **KHIAN CHUAN MARINE PTE LTD**

31, BUKIT BATOK CRESCENT, #01-53, THE SPLENDID JOUR

SINGAPORE 688070 Tel: +65-67535383 Fax: +65-67535388

Email: khianchuan@kem.com.sg

BUILDER: **FUJIAN SOUTHEAST SHIPBUILDING CO., LTD**

REVISIONS:

NO.	DESCRIPTION	DATE
1	ISSUED AS STRUCTURAL DRAWINGS	15/12/13
2	CHANGED ROOM ABOVE, LINES UPDATED, THREE OK, LADDER WORKED	17/08/13
3	REVISED WORKING DRAWINGS	17/08/13